

Select Grade™ Integral Color

Coloring System Guide



1 BAG PER 2 YARDS

1 BAG PER 1 YARD

2 BAGS PER 1 YARD

3 BAGS PER 1 YARD



SG01 BROWN



EARTH BROWN



TOASTED BROWN



CHINCHILLA BROWN



SG02 CORAL



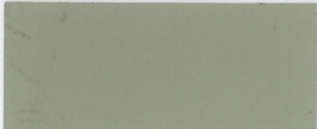
RED CORAL



CRIMSON CORAL



FIERY CORAL



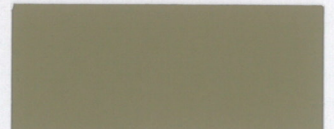
SG03 STONE



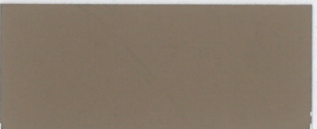
RIVER STONE



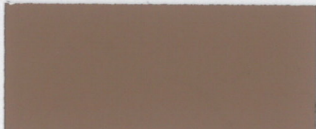
QUARTZ STONE



CLIFF STONE



SG04 CLAY



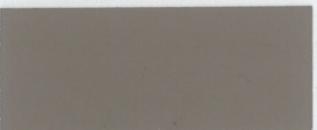
ARID CLAY



BAKED CLAY



UTAH CLAY



SG05 BARK



WISTERIA BARK



HICKORY BARK



MAHOGANY BARK



SG06 BUFF



HONEY BUFF



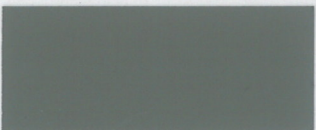
GOLDEN BUFF



MUSTARD BUFF



SG07 GRAY



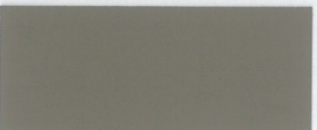
GAUNTLET GRAY



FOX GRAY



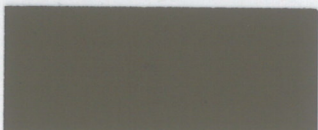
HEMATITE GRAY



SG09 TAUPE



BURNISHED TAUPE



WALNUT TAUPE



DARK TAUPE



SG10 THYME



AMBER THYME



HORIZON THYME



RUSTED THYME



SG11 ADOBE



ADOBE TAN



FIRED ADOBE



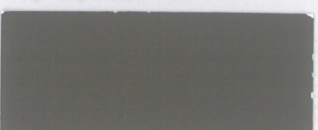
RAW ADOBE



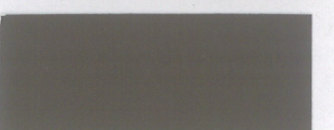
SG12 DRIFT



DRIFTWOOD SELECT



AFRICAN DRIFTWOOD



CHARRED DRIFTWOOD

Many things can affect the appearance of color. For best color matching results, a representative job site sample should be cast using materials and finishing techniques that will be used on the project.

Colors shown on this chart represent formulations using medium gray cement and sealed with solvent based Clear Guard® Cure and Seal. Variations can be expected due to differences in cement, aggregates and method of application. **NOTE:** When using lower color loadings, such as one bag per two yards, the color of the cement and sand have a more pronounced influence on the final color resulting in a greater chance of color variation.